

Test Results:

1. Shipping Mark

Main Mark: No shipping mark.

2. Description of Package-Product

- 1) External Container Size (Inches) : length 51-3/4 x width 51-1/2 x depth 4
- 2) Gross Weight of Packaged-Product Tested (lbs.) : 58.50
- 3) Packaged-product Type : Flat
- 4) Shipping Carton Forms : Double Wall Corrugated Board
- Box Manufacturer's Certificate : No
- Joint : Taped
- Closed With : Pressure Sensitive Tape
- Style : Top Opening

3. Transportation Test (As per ISTA 3A: 2008-Excluding Atmospheric Conditioning Test)

Sample Size: One Master Carton

1) Atmospheric Measurement

Sequence	Temperature (°C)	Humidity (% R.H.)	Storing Duration (hours)
Preconditioning	27.5	68	12

2) Drop Test

Drop Number	Height of Drop (Inches)	Orientation of Packaged-Product	
1	18	Edge	Edge 3-4
2	18	Edge	Edge 3-6
3	18	Edge	Edge 4-6
4	18	Corner	Corner 3-4-6
5	18	Corner	Corner 2-3-5
6	18	Edge	Edge 2-3
7	18	Edge	Edge 1-2
8	36	Face	Face 3
9	18	Face	Face 3



This document is issued by the Company subject to its General Conditions of Service printed overleaf, available on request or accessible at <http://www.sgs.com/en/Terms-and-Conditions.aspx> and, for electronic format documents, subject to Terms and Conditions for Electronic Documents at <http://www.sgs.com/en/Terms-and-Conditions/Terms-e-Documents.aspx>. Attention is drawn to the limitation of liability, indemnification and jurisdiction issues defined therein. Any holder of this document is advised that information contained hereon reflects the Company's findings at the time of its intervention only and within the limits of Client's instructions, if any. The Company's sole responsibility is to its Client and this document does not exonerate parties to a transaction from exercising all their rights and obligations under the transaction documents. This document cannot be reproduced except in full, without prior written approval of the Company. Any unauthorized alteration, forgery or falsification of the content or appearance of this document is unlawful and offenders may be prosecuted to the fullest extent of the law. Unless otherwise stated the results shown in this test report refer only to the sample(s) tested and such sample(s) are retained for 30 days only.

Attention: To check the authenticity of testing /inspection report & certificate, please contact us at telephone: (86-755) 8307 1443, or email: CN.Doccheck@sgs.com

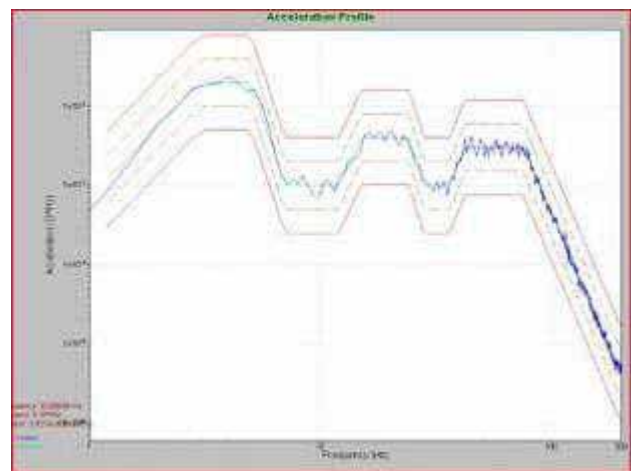
3) Vibration With and Without Load Test

1. Over-The-Road Vibration

Formula, with values, used to calculate	Top load (lbs.)	Total test time (Minutes)	Face resting on platform (Face No.)
TL-H=(108-H) x L x W x 0.0035	300	60	3
TL-W=(108-W) x L x H x 0.0035	45	30	4
TL-L=(108-L) x W x H x 0.0035	45	30	6

Vibration Spectrum:

OVER-THE-ROAD	
Frequency (Hz)	PSD Level, g ² / Hz
1	0.0007
3	0.02
5	0.02
7	0.001
12	0.001
15	0.004
24	0.004
28	0.001
36	0.001
42	0.003
75	0.003
200	0.000004
G(m/s ²)=0.53	



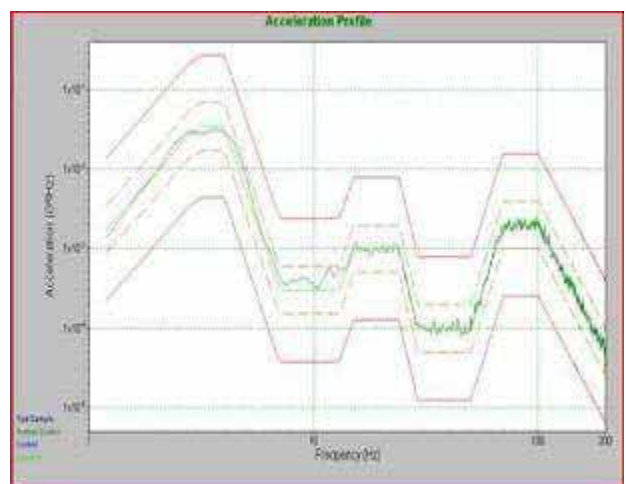
ISTA 3A – Over-the-Road Trailer Spectrum

2. Pick-up and Delivery Vibration:

Face resting on platform: Face 3 Total test time: 30 Minutes

Vibration Spectrum:

PICK-UP AND DELIVERY	
Frequency (Hz)	PSD Level, g ² / Hz
1	0.001
3	0.035
4	0.035
7	0.0003
13	0.0003
15	0.001
24	0.001
29	0.0001
50	0.0001
70	0.002
100	0.002
200	0.00005
G(m/s ²)=0.46	



ISTA 3A – Pick-up and Delivery Vehicle Spectrum



This document is issued by the Company subject to its General Conditions of Service printed overleaf, available on request or accessible at <http://www.sgs.com/en/Terms-and-Conditions.aspx> and, for electronic format documents, subject to Terms and Conditions for Electronic Documents at <http://www.sgs.com/en/Terms-and-Conditions/Terms-e-Document.aspx>. Attention is drawn to the limitation of liability, indemnification and jurisdiction issues defined therein. Any holder of this document is advised that information contained herein reflects the Company's findings at the time of its intervention only and within the limits of Client's instructions, if any. The Company's sole responsibility is to its Client and this document does not exonerate parties to a transaction from exercising all their rights and obligations under the transaction documents. This document cannot be reproduced except in full, without prior written approval of the Company. Any unauthorized alteration, forgery or falsification of the content or appearance of this document is unlawful and offenders may be prosecuted to the fullest extent of the law. Unless otherwise stated the results shown in this test report refer only to the sample(s) tested and such sample(s) are retained for 30 days only.

Attention: To check the authenticity of testing /inspection report & certificate, please contact us at telephone: (86-755) 8307 1443, or email: CN.Doccheck@sgs.com

SGS-CTC Standards Technical Services Co., Ltd. Guangzhou Branch, Guangzhou Laboratory.

1F, Building European Industrial Park, No.1 Shunshan Road, Wusha Section, Dailing Town, Shunde Foshan, Guangdong, China 528333 t (86-757)22805888 f (86-757)22805858 www.sgs.com.cn 中国·广东·佛山市顺德区大良街道办事处五沙顺和南路1号欧洲工业园一号楼首层邮编: 528333 t (86-757)22805888 f (86-757)22805858 e sgs.china@sgs.com

4) Drop Test

Drop Number	Height of Drop (Inches)	Orientation of Packaged-Product	
10	18	Edge	Edge 3-4
11	18	Edge	Edge 3-6
12	18	Edge	Edge 1-5
13	18	Corner	Corner 3-4-6
14	18	Corner	Corner 1-2-6
15	18	Corner	Corner 1-4-5
16	36	Face	Face 3
17 (on hazard)	18	Face	Face 2

5) Rotational Edge Drop Test

Impact Sequence #	Lift Edge	Height of Drop (in)
1	Edge 3-4	8
2	Edge 3-5	8
3	Edge 3-6	8

6) Full Rotational Flat Drop Test

Impact Sequence #	Test face	Face rests on a rigid surface
1	Face 3	One of the smallest faces
2	Face 3	One of the next largest faces

7) Hazard Impact Test

Impact Sequence #	Test Face	Height of Drop (in)
1	Face 1	16

Result: Satisfactory

Product: No visible damage was found on the product after performing the above tests.

Package: No visible damage was found on the package after performing the above tests.



This document is issued by the Company subject to its General Conditions of Service printed overleaf, available on request or accessible at <http://www.sgs.com/en/Terms-and-Conditions.aspx> and, for electronic format documents, subject to Terms and Conditions for Electronic Documents at <http://www.sgs.com/en/Terms-and-Conditions/Terms-e-Document.aspx>. Attention is drawn to the limitation of liability, indemnification and jurisdiction issues defined therein. Any holder of this document is advised that information contained herein reflects the Company's findings at the time of its intervention only and within the limits of Client's instructions, if any. The Company's sole responsibility is to its Client and this document does not exonerate parties to a transaction from exercising all their rights and obligations under the transaction documents. This document cannot be reproduced except in full, without prior written approval of the Company. Any unauthorized alteration, forgery or falsification of the content or appearance of this document is unlawful and offenders may be prosecuted to the fullest extent of the law. Unless otherwise stated the results shown in this test report refer only to the sample(s) tested and such sample(s) are retained for 30 days only.

Attention: To check the authenticity of testing /inspection report & certificate, please contact us at telephone: (86-755) 8307 1443, or email: CN.Doccheck@sgs.com

Surface Specification

Place the packaged-product so the package is in its most stable orientation, then turn the packaged-product so that one of the smallest faces is directly in front of you. If the one end of the package is noticeably heavier than the other, then position the smallest face with the heaviest end is directly in front of you.

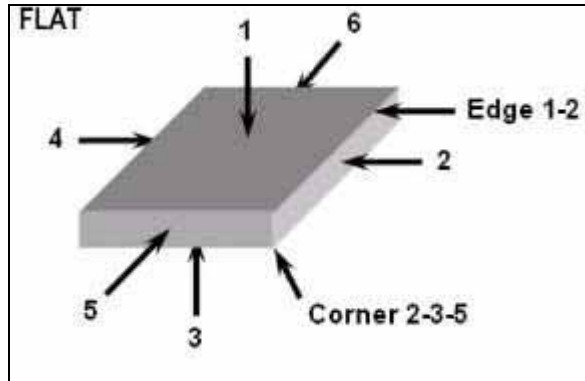


Photo Appendix



This document is issued by the Company subject to its General Conditions of Service printed overleaf, available on request or accessible at <http://www.sgs.com/en/Terms-and-Conditions.aspx> and, for electronic format documents, subject to Terms and Conditions for Electronic Documents at <http://www.sgs.com/en/Terms-and-Conditions/Terms-e-Document.aspx>. Attention is drawn to the limitation of liability, indemnification and jurisdiction issues defined therein. Any holder of this document is advised that information contained hereon reflects the Company's findings at the time of its intervention only and within the limits of Client's instructions, if any. The Company's sole responsibility is to its Client and this document does not exonerate parties to a transaction from exercising all their rights and obligations under the transaction documents. This document cannot be reproduced except in full, without prior written approval of the Company. Any unauthorized alteration, forgery or falsification of the content or appearance of this document is unlawful and offenders may be prosecuted to the fullest extent of the law. Unless otherwise stated the results shown in this test report refer only to the sample(s) tested and such sample(s) are retained for 30 days only.

Attention: To check the authenticity of testing /inspection report & certificate, please contact us at telephone: (86-755) 8307 1443, or email: CN.Doccheck@sgs.com

SGS-CTC Standards Technical Services Co., Ltd.
Guangzhou Branch

1F, 1 Building European Industrial Park, No.1 Shunheyan Road, Wusha Section, Daling Town, Shunde Foshan, Guangdong, China 528333 t (86-757)22805888 f (86-757)22805858 www.sgs.com.cn
中国·广东·佛山市顺德区大良街道办事处五沙顺和南路1号欧洲工业园一号楼首层邮编: 528333 t (86-757)22805888 f (86-757)22805858 e sgs.china@sgs.com



End of Report